

The PE 2000 Series is General Purpose Single Phase Single-Stage EMI Filters.



PE 2000



PE 2001



PE 2002



### Description :

- General purpose filtering performance.
- Easy and fast chassis mounting.
- Rated currents from 1 to 10A
- Low leakage current and high quality components ensure the safety and reliability of filters.
- Optional medical versions (B type)
- Various terminal options: faston/screw/wire.

### Typical Applications :

- Electrical and electronic equipment.
- Office automation equipment.
- Consumer goods.
- Datacom equipment.
- Household equipment.
- Medical equipment

### Electrical Schematic :

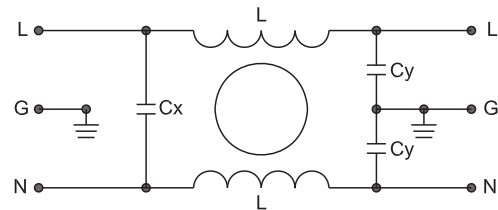




Fig 1

### Specification :

Rated Voltage:	120/250 VAC
Rated Current:	1A~10A
Operating Frequency:	50/60 Hz
Temperature Range:	HPF 25/085/21
Test Voltage ( 1min ):	
Line to Ground:	2000 VAC
Line to Line:	1450 VDC

### Filter Selection Table :

Filter	Rated current (A)	Rated voltage (V)	Leakage Current (mA)	Input/Output connections		Electrical Schematic	Dimension
							
PE2000-1-01	1	120/250	0.5		01	1	1
PE2000-3-01	3	120/250	0.5		01	1	1
PE2000-6-01	6	120/250	0.5		01	1	1
PE2000-10-01	10	120/250	0.5		01	1	1
PE2000-1-03	1	120/250	0.5		03	1	3
PE2000-3-03	3	120/250	0.5		03	1	3
PE2000-6-03	6	120/250	0.5		03	1	3
PE2000-10-03	10	120/250	0.5		03	1	3
PE2001-1-01	1	120/250	0.5		01	1	2
PE2001-3-01	3	120/250	0.5		01	1	2
PE2001-6-01	6	120/250	0.5		01	1	2
PE2001-10-01	10	120/250	0.5		01	1	2
PE2001-1-03	1	120/250	0.5		03	1	4
PE2001-3-03	3	120/250	0.5		03	1	4
PE2001-6-03	6	120/250	0.5		03	1	4
PE2001-10-03	10	120/250	0.5		03	1	4
PE2002-1-01	1	120/250	0.5		01	1	5
PE2002-3-01	3	120/250	0.5		01	1	5
PE2002-6-01	6	120/250	0.5		01	1	5
PE2002-10-01	10	120/250	0.5		01	1	5

### Outline Drawing and Dimensions:

(Unit:mm)

All dimensions in mm; 1 inch=25.4mm

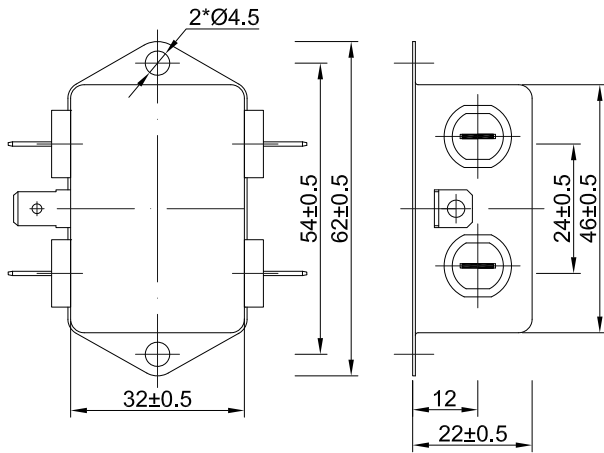


Fig 1

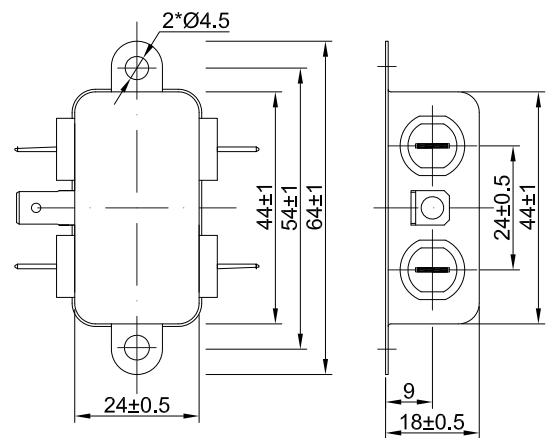


Fig 2

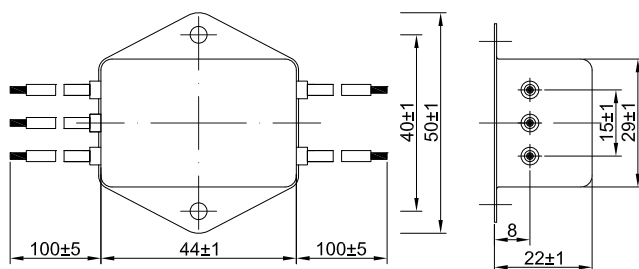


Fig 3

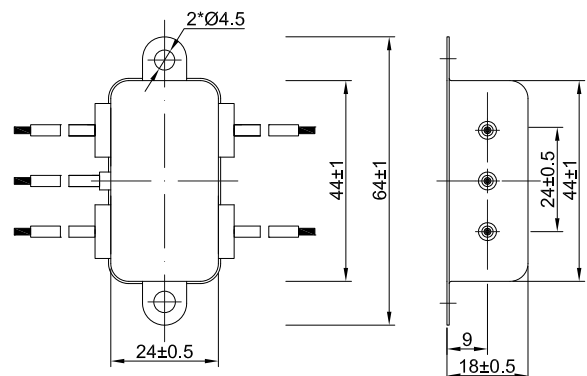


Fig 4

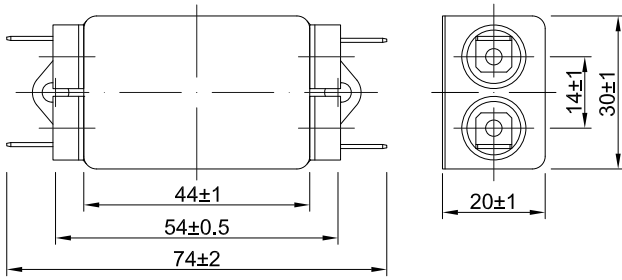
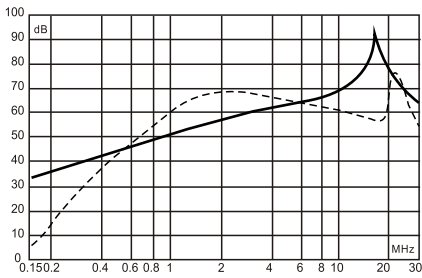


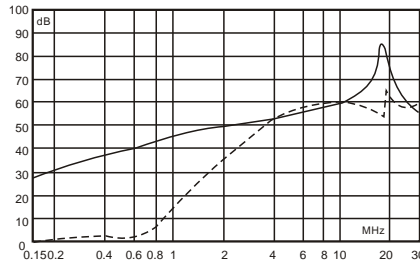
Fig 5

Insertion Loss in dB:

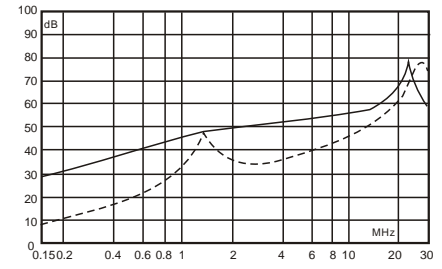
(Measured in 50Ω system , as IEC/CISPR NO.17)



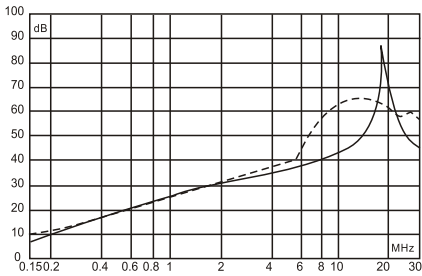
1A



3A



6A



10A

----- Differential Mode  
 ——— Common Mode