

The PE 3800 Series is Compact EMC/RFI Filters for Three-Phase Inverters and Power Drive Systems.



PE 3800



Description :

- Excellent broadband attenuation performance from 150kHz up to 30MHz.
- Industry standard EMC solution for three phase PDS filtering.
- Slim and user-friendly book-style design with touch-safe terminal blocks for minimum space and maximum safety.
- Optional wire input/output connections.
- Compact unit and easy to install .
- Aluminium housing,light weight.
- High quality components ensure the safety and reliability of filters.

Typical Applications :

- Three-phase variable speed motor drives,power drive systems (PDS)
- Four quadrant motor drives and servo drives
- Elevators,CNC machines and cranes
- Thyristor drives
- Industrial applications comprising power conversion devices, such as machinery,machine tools or process automation equipment
- HVAC equipment,power supply,UPS and further three-phase applications

Electrical Schematic :

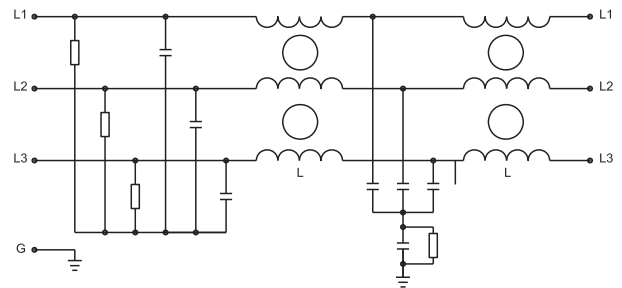



Fig 1

Specification :

Rated Voltage:	275/480 VAC
Rated Current:	1A ~ 250 A
Operating Frequency:	50/60 Hz
Temperature Range :	HPF 25/100/21
Test Voltage (1min):	
Line to Ground:	2700 VDC
Line to Line:	1450 VDC

Filter Selection Table :

Filter	Rated Current (A)	Rated Voltage (V)	Leakage Current (mA)	Input/Output Connections 	Electrical Schematic	Dimension
PE3800-8-60	6	275/480	33	60	1	1
PE3800-16-60	16	275/480	33	60	1	2
PE3800-30-60	30	275/480	33	60	1	3
PE3800-42-60	42	275/480	33	60	1	4
PE3800-55-60	55	275/480	33	60	1	5
PE3800-75-60	75	275/480	33	60	1	6
PE3800-100-60	100	275/480	33	60	1	7
PE3800-130-60	130	275/480	33	60	1	7
PE3800-180-60	180	275/480	33	60	1	8

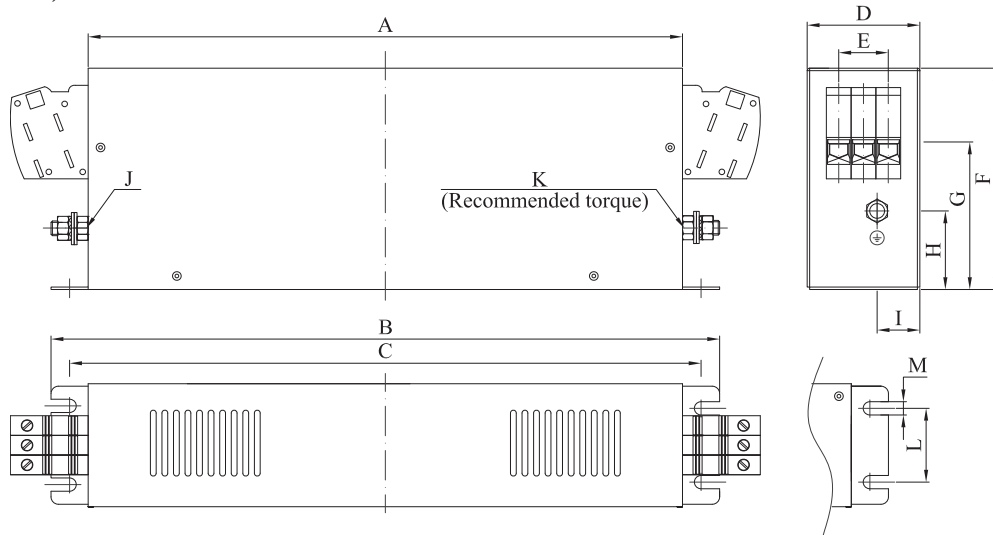
■ Maxium leakage under normal operating conditions.

■ Note: if two phases are interrupted, worst case leakage could reach 6-8 times higher levels.

Mechanical Dimension:

(Unit:mm)

All dimensions in mm; 1 inch=25.4mm



Filter	A	B	C	D	E	F	G	H	I	J	K	L	M
PE3800-8-60	160	190	180	40	23	70	46.5	22	14.5	M5	2-2.5	20	4.5
PE3800-16-60	200	235	220	45.5	23	70	46	23	17	M5	2-2.5	25	5.4
PE3800-30-60	240	270	255	50	23	85	59.5	30	19	M5	2-2.5	30	5.4
PE3800-42-60	280	310	295	50	23	85	59.5	30	19	M6	3-4	30	5.4
PE3800-55-60	220	250	235	85	44	90	60	25	31	M6	3.0	60	5.4
PE3800-75-60	240	270	255	80	42	135	103	59	29	M6	3-4	60	6.5
PE3800-100-60	240	270	255	90	48	150	106	60	26	M10	10-17	60	6.5
PE3800-130-60	240	270	255	90	48	150	106	60	26	M10	10-17	60	6.5
PE3800-180-60	350	380	365	120	70	170	107	48.5	41.5	M10	10-17	102	6.5

Filter Input/output connector cross sections:

	8A	16A	30A	42A	55A	75A	100A	130A	180A
Cable	4 mm ²	4 mm ²	16 mm ²	16 mm ²	25 mm ²	25 mm ²	50 mm ²	50 mm ²	95 mm ²
Recommended Torque	0.6 Nm	0.6 Nm	2.0 Nm	2.0 Nm	3.0 Nm	3.0 Nm	5.9 Nm	5.9 Nm	14.7 Nm