

The PE 4100 Series is General Purpose Three Phase and Neutral Line Filters.



PE 4100



Description :

- General purpose, three phase four line filters
- Excellent interference suppression performance for CM and DM
- High quality components, high performance/cost
- Chassis mounting with various connection: fast on/bolt/wire terminals
- Made to order acceptable

Typical Applications :

- General purpose four-wire filtering
- UPS
- High power office equipment
- Installations comprising automation equipment
- Mainframe computer systems and further three-phase + neutral electricity supply.

Specification :

Rated Voltage:	250/440VAC
Rated Current:	6A~600A
Operating Frequency:	50/60Hz
Temperature range:	HPF 25/085/21
Test Voltage (1min):	
Line to Ground:	2700 VDC
Line to Line:	1450 VDC
Line to Neutral	1450 VDC

Electrical Schematic :

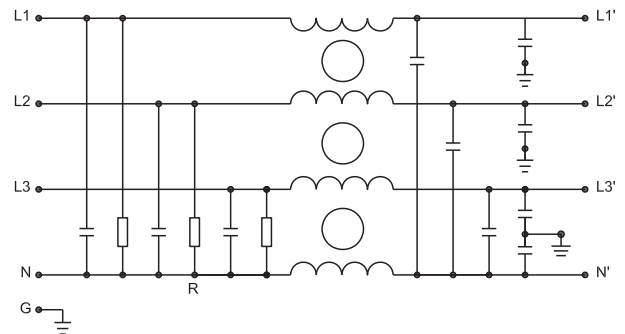


Fig 1

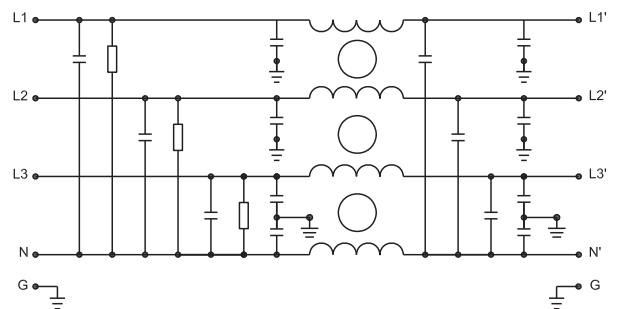


Fig 2

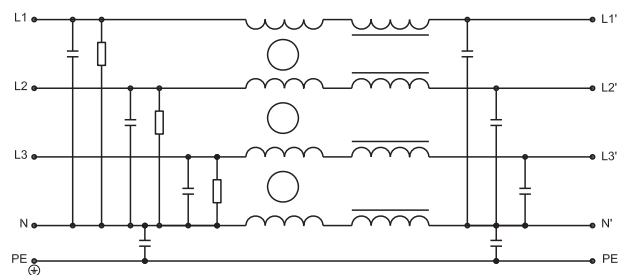


Fig 3

Filter Selection Table :

Filter	Rated Current (A)	Rated Voltage (V)	Leakage Current (mA)	Input/Output Connections			Electrical Schematic	Dimension
				Input	Output	Neutral		
PE4100-6-01	6	250/440	1.5			01	1	1
PE4100-10-01	10	250/440	1.5			01	1	1
PE4100-20-06	20	250/440	2.5			06	1	2
PE4100-30-06	30	250/440	2.5			06	1	2
PE4100-40-06	40	250/440	2.5			06	1	3
PE4100-50-06	50	250/440	2.5			06	1	3
PE4100-80-06	80	250/440	2.5			06	1	4
PE4100-100-06	100	250/440	2.5			06	1	4
PE4100-150-06	150	250/440	10			06	1	5
PE4120-200-06	200	250/440	10			06	2	5
PE4200-300-90	300	250/440	10	90			3	6
PE4200-400-90	400	250/440	10	90			3	7
PE4200-500-90	500	250/440	10	90			3	7
PE4200-600-90	600	250/440	10	90			3	7

Outline Drawing and Dimensions:

(Unit:mm)

All dimensions in mm; 1 inch=25.4mm

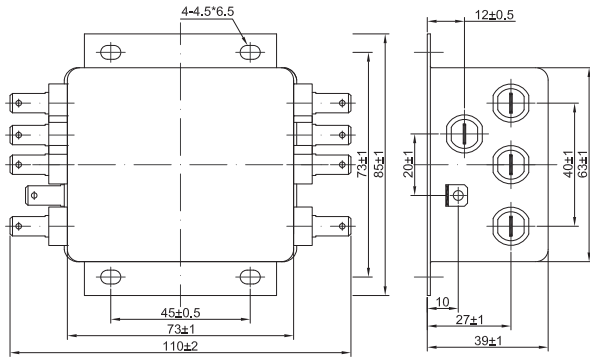


Fig 1

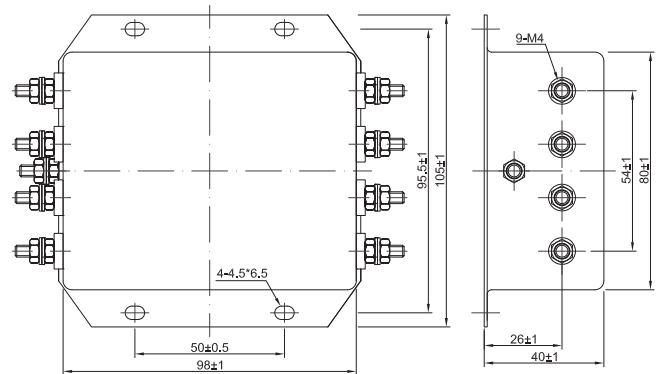


Fig 2

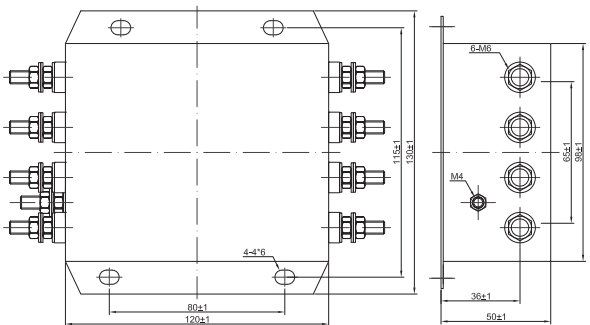


Fig 3

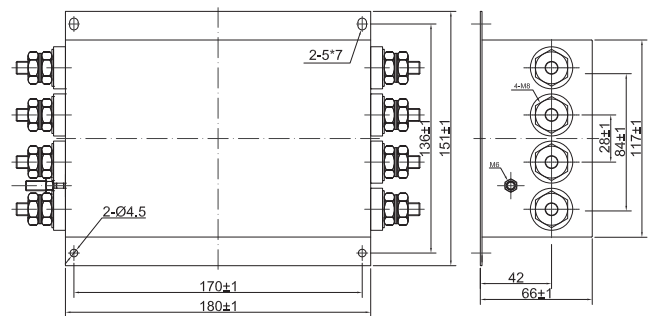


Fig 4

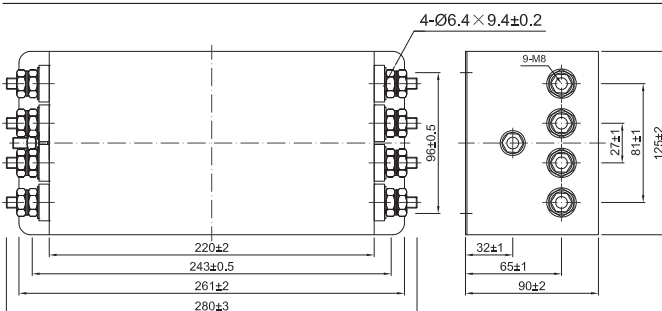


Fig 5

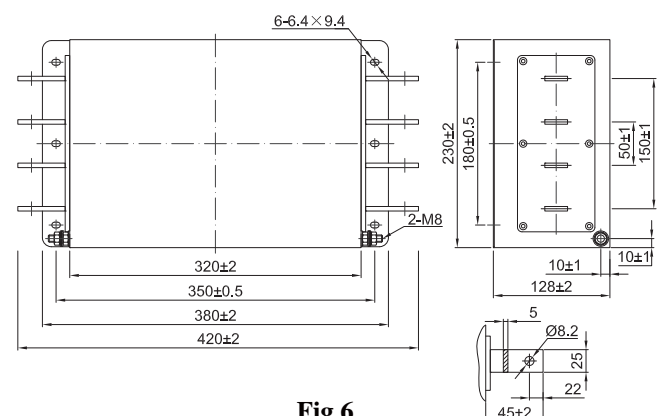


Fig 6

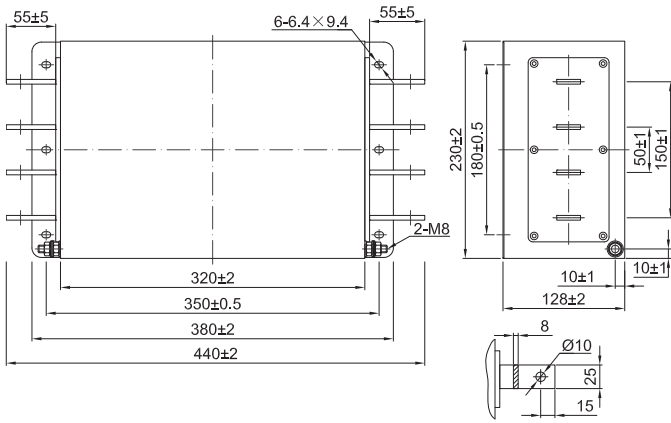
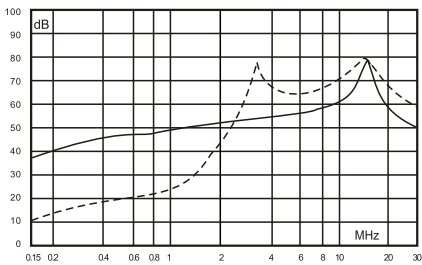


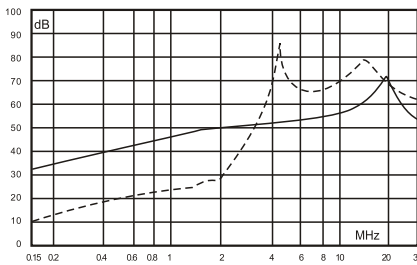
Fig 7

Insertion Loss in dB:

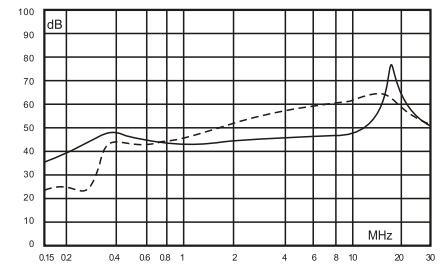
(Measured in 50Ω system , as IEC/CISPR NO.17)



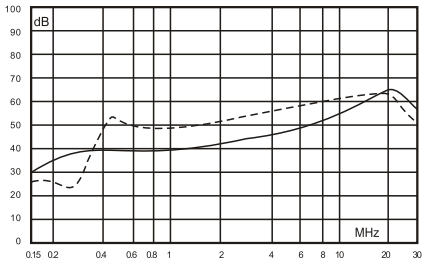
6A



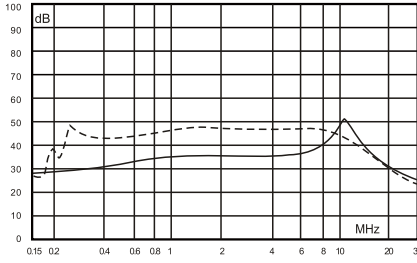
10A



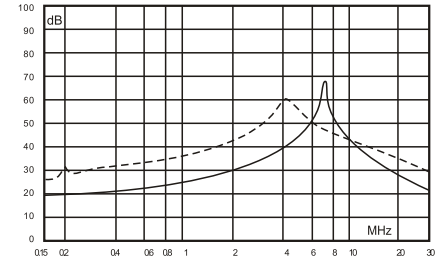
20A



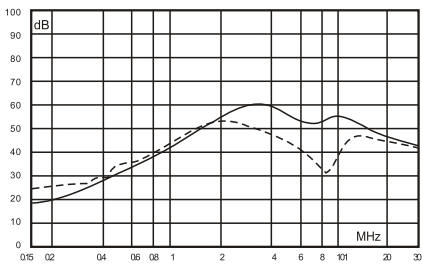
30A



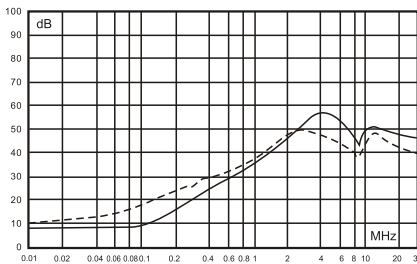
40A/50A



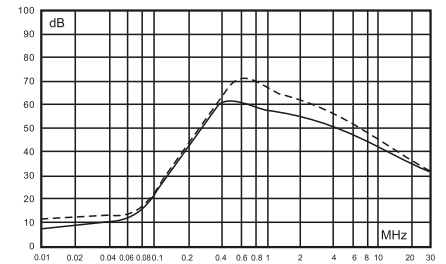
80A



100A



200A



300A~600A

----- Differential Mode
 ——— Common Mode