

The PE 8000 Series is General Purpose IEC Inlet Filter



PE 8000



PE 8000S



PE 8000S1

Mounting type:screw,snap-in



Description :

- Compact unit,light weight,low price,easy to install
- Rear/front or snap-in mounting.(S and S1 type)
- High quality components ensure the safety and reliability of filters
- Optional medical versions (B type) comply with the requirements of IEC/EN 60601-1 for creepage and clearance, leakage current and high potential testing.
- Wide mounting flanges available.

Typical Applications :

- Single-phase power supplies, switch-mode power supplies.
- Small to medium-sized machines and household equipment.
- Portable electrical and electronic equipment.
- Test and measurement equipment.
- Medical equipment.

Electrical Schematic: :

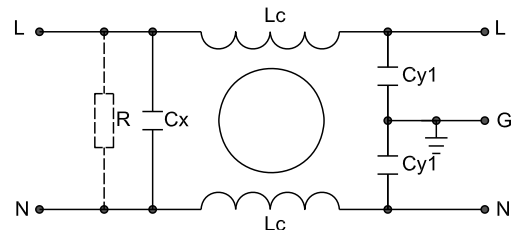


Fig 1

Specification :

Rated Voltage:	120/250 VAC
Rated Current:	1A~10 A
Operating Frequency:	50/60 Hz
Temperature Range :	25/085/21
Test Voltage (1min):	
Line to Ground:	2000 VAC
Line to Line:	1450 VDC

Filter Selection Table :

Filter	Rated current (A)	Rated voltage (V)	Leakage Current (mA)	Input/Output connections	Electrical Schematic	Dimension
PE8000-1-01	1	120/250	0.5	01	1	1
PE8000-3-01	3	120/250	0.5	01	1	1
PE8000-6-01	6	120/250	0.5	01	1	1
PE8000-10-01	10	120/250	0.5	01	1	1
PE8000S-1-01	1	120/250	0.5	01	1	2
PE8000S-3-01	3	120/250	0.5	01	1	2
PE8000S-6-01	6	120/250	0.5	01	1	2
PE8000S-10-01	10	120/250	0.5	01	1	2
PE8000S1-1-01	1	120/250	0.5	01	1	3
PE8000S1-3-01	3	120/250	0.5	01	1	3
PE8000S1-6-01	6	120/250	0.5	01	1	3
PE8000S1-10-01	10	120/250	0.5	01	1	3

Mechanical Dimension:

All dimensions in mm; 1 inch=25.4mm

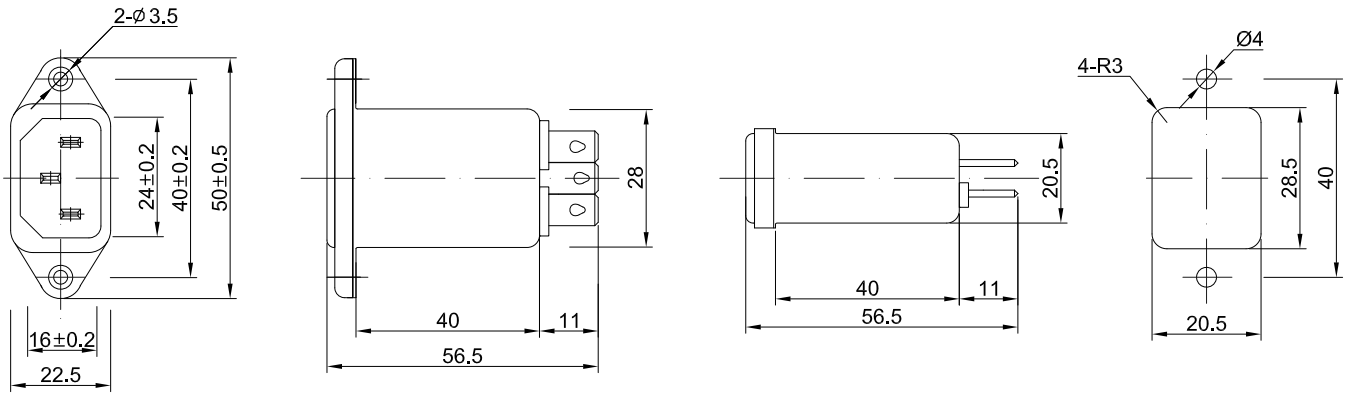


Fig 1

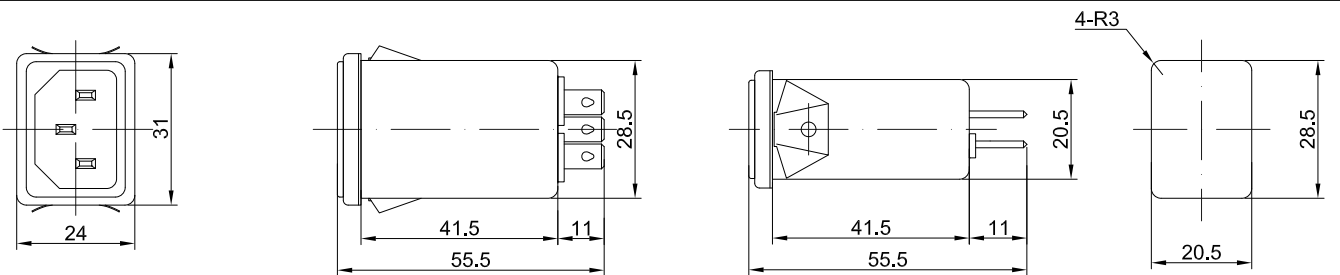


Fig 2

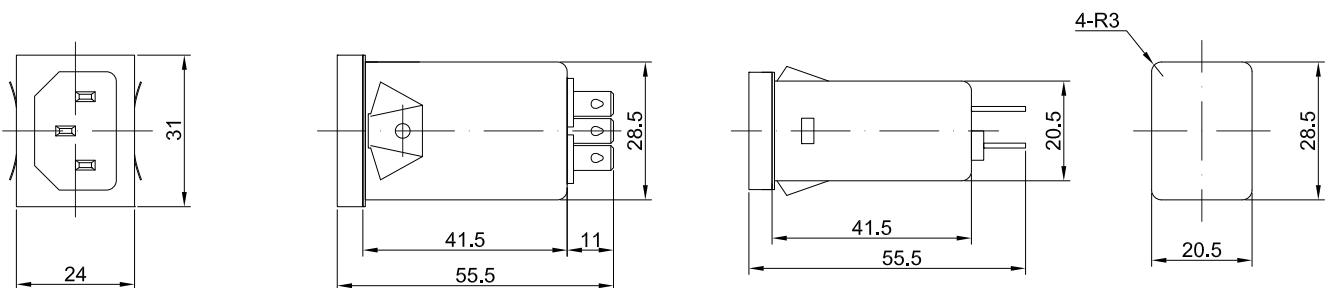
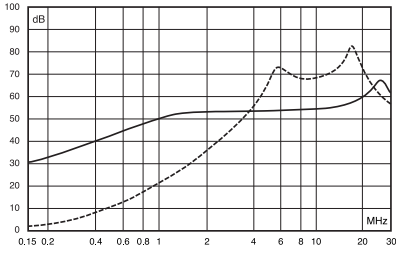


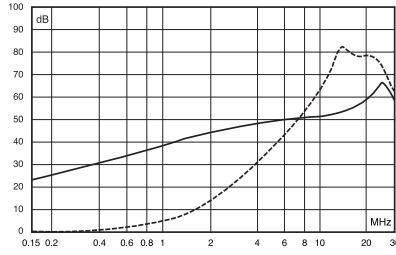
Fig 3

Insertion Loss in dB:

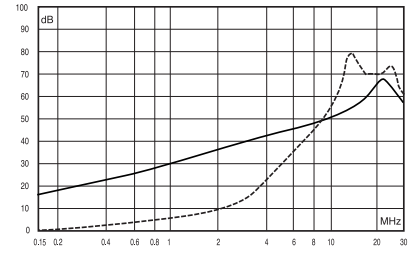
(Measured in 50Ω system , as IEC/CISPR NO.17)



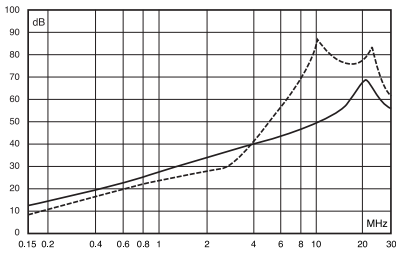
1A



3A



6A



10A

----- Differential Mode
 ——— Common Mode