

**产品说明 Product Features**



体积小, 经济节省, 可为客户定制

Compact unit,easy to install,Custom design acceptable

抑制沿电源线传导的电磁干扰, 抗饱和能力强, 有较好的谐波抑制功能

Suppressing the electromagnetic interference by power cord conduction,good anti-saturation and harmonicsuppression function

低压降, 低泄漏电流, 插入损耗高, 干扰抑制能力强

Low leakage current,High performance



该系列滤波器主要用于大容量的工业电气设备, 如变流变频装置, 净化电源屏蔽房及电子方舱、屏蔽机柜等  
Available for secure communication areas and MRI/NMRI,SCR converter equipment,screened facilities, power conditioner,anechoic chambers,and shielded cabinet...etc.

**技术参数 Technical Specifications:**

额定电压 Rated Voltage	220/380VAC 500VDC
工作频率 Operating Frequency	50/60Hz
耐压试验:(一分钟) Test Voltage (1min)	1000VDC (line/line) 1000VDC (line/ground)
泄漏电流 Leakage Current	@220V/50Hz
气候类别 Climatic Category	25/070/21

**选型表 Filter selection table:**

规格 Filter	额定电流 Rated Current (A)	泄露电流 Leakage Current(A)	插入损耗 Insertion Loss (dB)	外形尺寸 Dimension
PESF-H101A-	1 × 15	≤0.32	70-100dB,150K-10/40GHz	Fig 1
PESF-H101A-	1 × 25	≤0.32		
PESF-H101A-	1 × 50	≤0.32		
PESF-H201A-	2 × 15	≤0.42		Fig 2
PESF-H201A-	2 × 25	≤0.46	100dB, 14K-10G/40GHz	Fig 3
PESF-H201C-	2 × 1	≤0.33		
PESF-H201C-	2 × 3	≤0.6		
PESF-H201C-	2 × 6	≤0.9		
PESF-H201C-	2 × 20	≤6.6		
PESF-H201C-	2 × 30	≤6.6		

外形尺寸 Mechanical Dimension (mm)

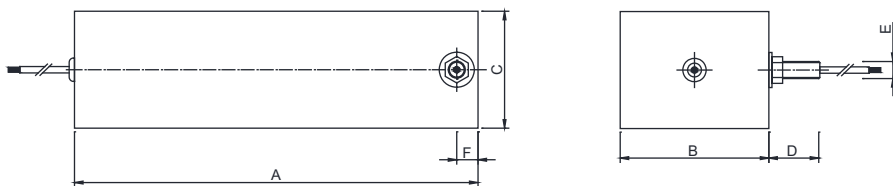


Fig 1

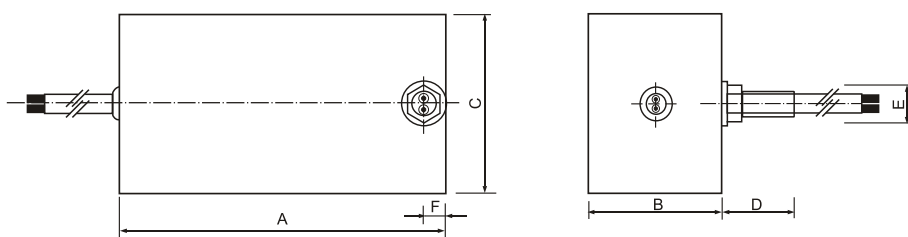


Fig 2

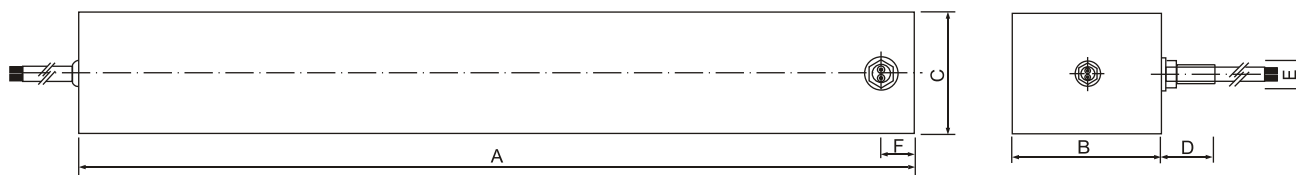


Fig 3

尺寸表 Dimensions (mm)

图号 Drawing No.	规格 Filter	A	B	C	D	E	F
Fig 1	H101A	380	140	110	48	M16	20
Fig 2	H201A	220	90	120	42	M16	15
Fig 3	1A	300	100	150	46	M16	20
	3-6A	310	110	160	46	M16	15
	20-30A	760	120	200	46	M24	30

所有尺寸单位为mm, All dimensions in mm; 1 inch=25.4mm